

॥ SHRI HARJI ॥



Childhood is a short+ season.  
Let's relive it!



## Blessed from the Perfectly Satisfying Spiritual Mentors-

- SUPREME LORD BHAGWAN SRI SWAMINARAYAN
- ANADI MAHAMUKTRAJ PARAM PUJYA SHRI ABJIBAPA
- GURUVARYA ANADIMUKTA PARAM PUJYA SHREE NARAYANMAMA & ANADIMUKTA PUJYA SHREE LEELAMASI



## Our Vision

Our Prime objective is to Deliver the Best Services,  
by Inculcating Highest Ethical Standards,  
Purest Moral Values and Enriched Culture.

KRUPAL – meaning “THE BLESSED ONE”  
( Blessings of Almighty Supreme Lord Sri Swaminarayan )  
earmarks a residential revolution in the mid-income  
segment by benchmarking facilities that spell luxury and  
available at competitive price.



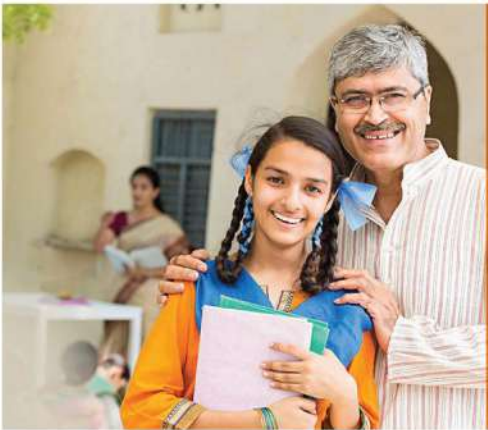




AN AFFORDABLE PROJECT FOR EVERYONE



Now, mid age couple or singles can have peaceful life, as they will not require carrying any household activities by themselves.



Your wish to facilitate your child for education in Ahmedabad, while continuing your business activity at your hometown gets fulfilled here.



Here, your wish to spend more time with your family gets attained, as cooking, cleaning, washing etc. are planned to support you.



Now, as an NRI you will have trouble free and relaxed stay, as you will not require investing time in fixing various facilities



Your wish to earn better returns on investment will be satisfied here due to unique concept and promising location



# A glimpse of worry Free solutions

Help Desk will assist you in finding AC/RO service person, Electrician, plumber as well as Bill payments and Bookings.



centralized House keeping team so you can enjoy trouble free living at your home



seperate cafeteria to enjoy Home Like food



Gym with instructor for your perfect body workout



medical, Physiotherapy, yoga services for a Healthy Living



common use washing machine, Laundry & car wash system



grocery, vegetable & medical store for making your routine easy



special fix route cab service



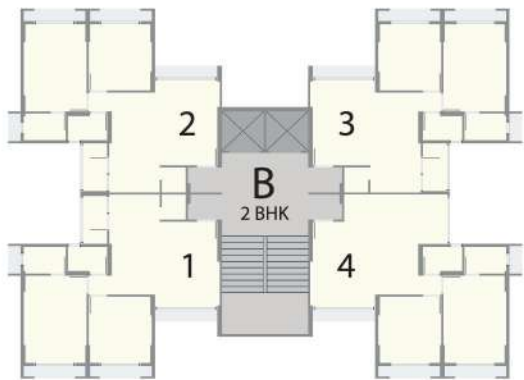


## All major types of Indoor & Outdoor Amenities

- Indoor & Outdoor Games
- Children Play area
- Party lawn & Club house
- Reading Library
- Open Theater
- 24 hours security and CCTV surveillance
- Huge parking area
- Pick-up drop-off zone
- Mini ambulance to handle any medical emergency
- Wi Fi Zones
- Rain water harvesting system



# 2 BHK UNIT PLAN



\*Proposed Layout











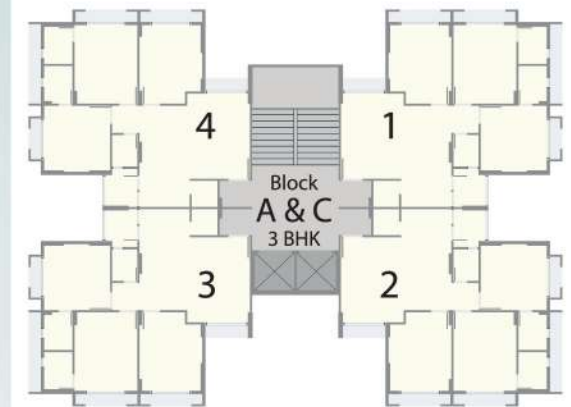








# 3 BHK UNIT PLAN



\*Proposed Layout



# Unique Propositions



MOBILE APP



SAND BLOCK CONSTRUCTION WITH COPING



POWER BACKUP FOR COMMON AREA



SEWAGE TREATMENT PLANT



WASTE DISPOSAL SYSTEM

## Specifications



### STRUCTURE

- Earthquake Resistant RCC Structure

### FLOORING

- Vitrified tiles in all bedrooms, kitchen, living and dining areas
- Ceramic tiles in all bathrooms Kota stone or similar in the store and wash areas

### DOORS & WINDOWS

- Decorative wooden main door with wooden framing
- Flush doors with wooden framing in all bedrooms and bathrooms
- Powder coated or anodized aluminium sliding windows with stone jambs

### ELECTRIFICATION

- Concealed copper wiring with AC, TV, Telephone and water purifier point and adequate points as per Electric Consultant's Design
- Decorative modular switches with MCB distribution board

### WALLS

- All interior walls plastered and putty finished
- Exterior walls painted with standard quality paints

### KITCHEN

- Polished natural granite platform
- Stainless steel kitchen sink
- Glazed/Ceramic tile dado up lintel level on wall above platform

### BATHROOMS

- Designer Bathrooms with anti-skid full height ceramic tiles
- Concealed PVC conduits with PVC insulated ISI grade copper wiring
- Geyser points in all bathrooms





# PROJECT LAYOUT PLAN



\*Proposed Layout



## ready to move solution also available



If you want more than four walls, we offer two options for ready to move. You can move-in with all electrical fittings which include AC, RO Machine, Geyser, TV, Internet, D2H and Freez. If you want to move-in with furniture you need not to worry about Dining Table, Chair, Sofa, Wardrobe, Bed, Curtain and Modular Kitchen. You can choose any one or both options as per your need.



## celebrations in many forms



You will experience a real zeal to celebrate almost all the festivals at Krupal Bachpan. Special arrangements will be done so that you don't miss on any festivity. There would be special arrangements like watching a drama or play at this project premises itself. All this will result in a family like bonding among members. So you will be a part of big, really big family. So be ready for it.



A Project by



Architect  
**R.K. ASSOCIATES**

Structure engineer  
DR. KELKAR DESIGNS PVT. LTD., Mumbai

MEP Consultant  
ARTECH ENGINEERING SOLUTIONS

**Site Address:**

**Krupal Bachpan**, 21, ND Avenue,  
Opp. Club O7, Sky City Road, S. P. Ring Road,  
Ahmedabad 300 058, INDIA.

Contact: +91-99788 88162, 97129 58121, 97277 07004, 99798 47121. [www.krupal.com](http://www.krupal.com) E-mail : [info@krupal.com](mailto:info@krupal.com)



**Note:** Images, visuals and text mentioned in this brochure are for information and easy understanding purpose only. There can be few changes in final offerings. This brochure should not be treated as any form of binding document, offer or legal contract. Site development is subject to clearances from concerned entities. **Some of the facilities at Krupal Bachpan will be on paid basis.**